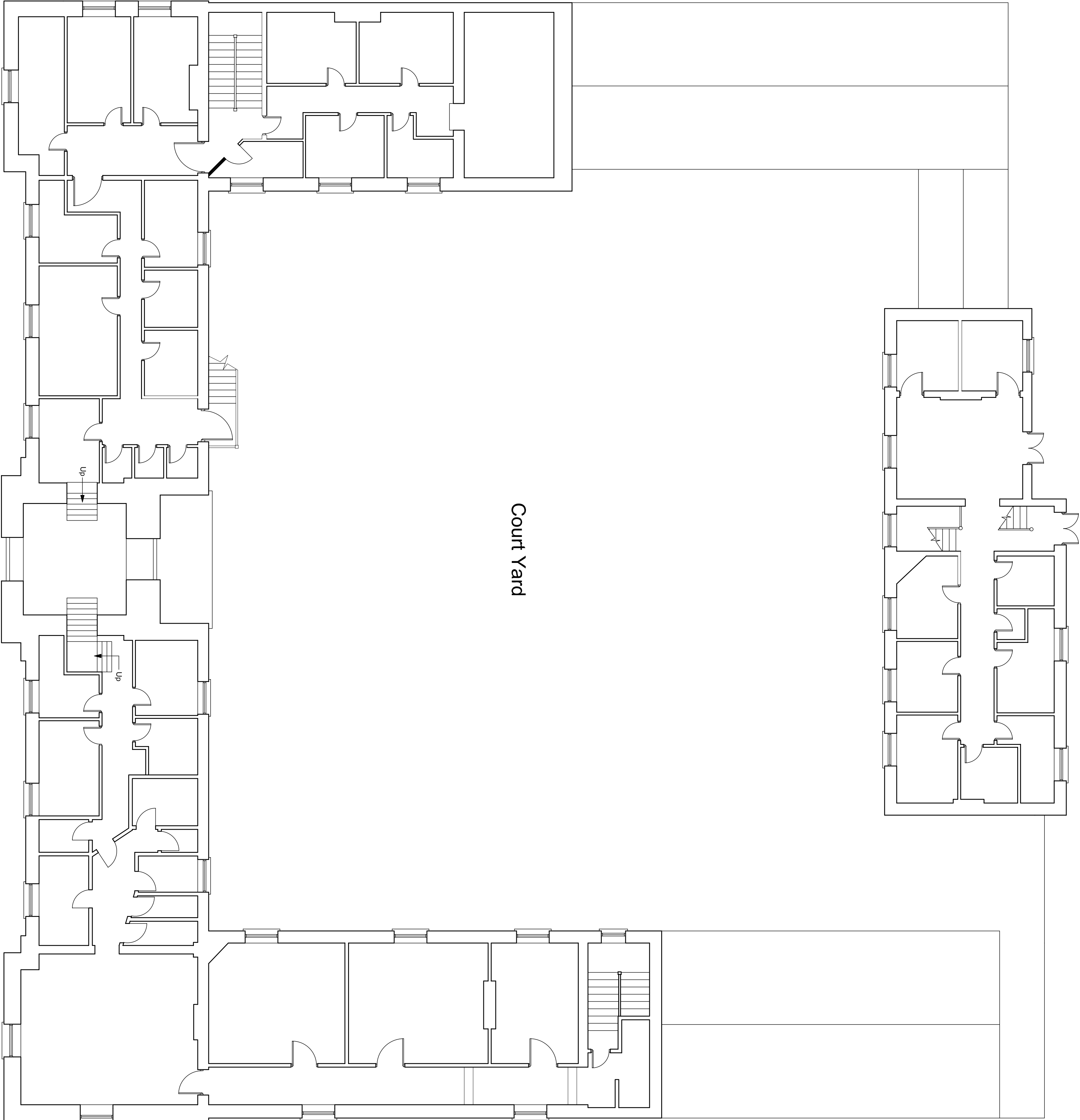
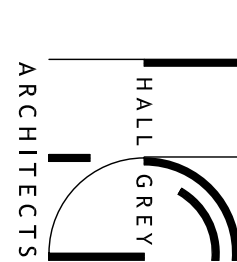


STABLE BLOCK GROUND FLOOR



STABLE BLOCK FIRST FLOOR

No.		DATE				
<p>THE DRAWING IS COPYRIGHT © 2008 BY THE ARCHITECTS. ALL RIGHTS RESERVED. NO PART OF THIS DRAWING MAY BE REPRODUCED OR TRANSMITTED IN ANY FORM OR BY ANY MEANS, ELECTRONIC OR MECHANICAL, WITHOUT PERMISSION IN WRITING FROM THE ARCHITECTS. THE ARCHITECTS ACCEPT NO LIABILITY FOR ANY LOSS OR DAMAGE, INCLUDING CONSEQUENTIAL LOSS OR DAMAGE, ARISING FROM THE USE OF THIS DRAWING.</p>						
<p>ANY DISCREPANCIES ARE TO BE REPORTED TO THE ARCHITECT BEFORE THE WORK IS COMMENCED</p>						

PROJECT	
Derbyshire Investments Ltd	
Conversion of Kimmel Hall	
Kimmel, Abergelle, Conwy	

DRAWING TITLE	
Stable block	
Ground/first floor plan - existing	
JOB NUMBER	DRAWING SIZE
3229	A0
DATE	SCALE
18.01.08	1:100 @ A0
DRAWN BY	CHECKED BY