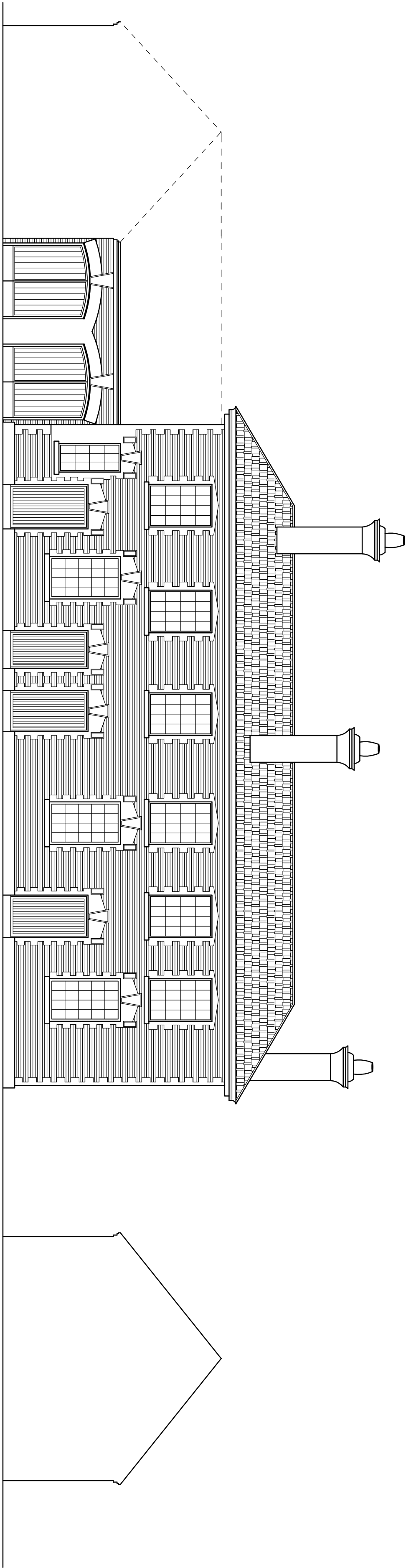
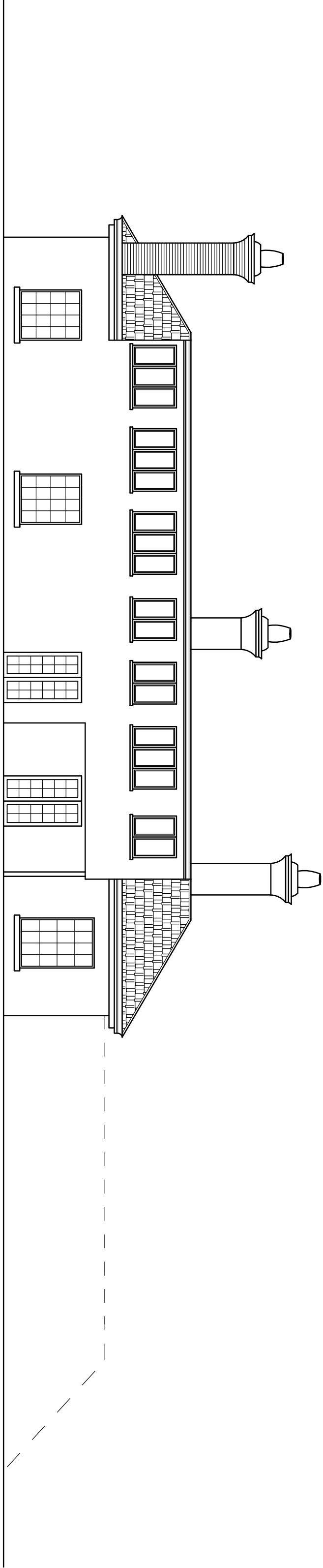


REVISION	AMENDMENT	DATE



COURTYARD ELEVATION OF SOUTH WING



REAR ELEVATION OF SOUTH WING

DATE	March '06	SCALE	1:100	DRAWING NO.	2011/EE/02	REV.	
CLIENT	Derbysnife Investments Jubilee House 1 Nottingham Road Ripley Derbysnife DES 3DJ						
DRAWING TITLE	Proposed Residential Development at..... Kinnel Hall St. Georges Abergele						
STABLE BLOCK EXISTING SOUTH ELEVATIONS						<div><div></div><div>D W A</div></div>	
						3/5 The Highway, Hawarden Flinshire, Nr. Chester CH5 3DG Telephone: 01244 534 984 Facsimile: 01244 539 609	